

CONFERENCE  
& EVENTS

ST BRIDE FOUNDATION

BRIDE LANE, FLEET STREET

LONDON EC4Y 8EQ

T: 020 7353 3331

[WWW.SBF.ORG.UK](http://WWW.SBF.ORG.UK)

[BOOKINGS@SBF.ORG.UK](mailto:BOOKINGS@SBF.ORG.UK)







## *Welcome to* **ST BRIDE FOUNDATION**

Since its inception in 1891 the Foundation has opened its doors to the people of Fleet Street, Farringdon and the surrounding areas welcomed them into what was, and is, one of the most fascinating community focused organisations in the City Of London.

The Foundation was originally designed to provide a social, cultural and recreational centre for local people with particular emphasis on those in the printing and associated trades. Apart from the printing school and outstanding technical library the Foundation also housed a swimming pool, which we believe to be the first public swimming pool in the City of London, as well as a gymnasium.

The printing school moved to the south of the river Thames many years ago but much of the equipment remains on site and is now being used, bringing the teaching of printing back to Fleet Street. The St Bride Library is now generally acknowledged to be a world class resource with extensive collections relating to printing, typography and graphic design. Readers come from across the globe to delve into the archives.

The Foundation has always prided itself on being there for local people and for local charities. Many of its beautiful rooms have





always been available to the public for a variety of uses. The impressive Bridewell Hall has been used for a huge variety of events on a regular basis.

Rooms for hire range from the small and intimate suitable for board meetings, to the grand and stately Salisbury Room which is not only in demand as a board room, but also for fine dining, tailor-made receptions, wedding and civil partnership ceremonies.

From classics to contemporary, the Bridewell Theatre offers evening programmes with something for everyone. We play host to a variety of companies from the 'Musical Theatre Academy and London School of Musical Theatre' to the 'London Ballet Company', offering you, our audience, the opportunity to see the up and coming, the experienced, the amateur and the professionals tread our boards.

Finally, we have the Bridewell Bar, not just for drinks in the wee small hours, but other special events, including a gallery featuring artists and photographers.

In recent years the Foundation has experienced a total renaissance and is now a living and breathing community once again, in the heart of the City of London.

The doors are open to all and you will always be assured of a warm welcome.



# CONTENTS

## *Large Rooms*

<b>1-180 PEOPLE</b>	
Bridewell Hall	p6
Bridewell Theatre	p24

## *Medium Rooms*

<b>1-80 PEOPLE</b>	
Farringdon Room	p10
Salisbury Room	p12
Passmore Edwards Room	p16
Blackfriars Room	p20

## *Small Rooms*

<b>1-50 PEOPLE</b>	
The Print Workshop	p18
Fleet Room	p22
Ludgate Room	p23
Theatre Bar	p26





*Large Room*

## **BRIDEWELL HALL**

**T**he Bridewell Hall is an elegant high-ceilinged space with large windows lending itself just as easily to conferences, lectures and AGMs as to lavish parties and wedding receptions.



The room has a palatial feel, filled with natural daylight. Adorning the rear wall is the painting The Heart of the Empire - which depicts the 1935 Jubilee Service painted by Frank Salisbury and owned by Her Majesty the Queen.

For events over 100 participants it is recommended that you book the adjoining Farringdon Room.

## COMMUNICATIONS

WiFi throughout

## LIGHTING

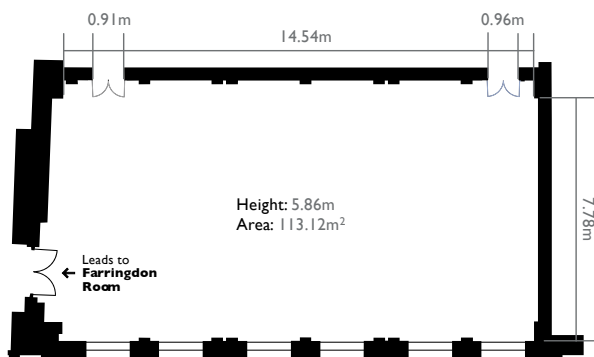
Natural daylight, blinds for full blackout & flexible lighting

## ACCESS

Disabled access via St Bride's Passage from Salisbury Court

## CAPACITY

- a) Theatre style 150 (max)
- b) U Shaped 45 (max)
- c) Boardroom 50 (max)
- d) Classroom 80 (max)
- e) Formal Dinner 100 (max)
- f) Standing 180 (max)





*Medium Room*

## FARRINGTON ROOM

**P**erfect for training days, workshops and small reception parties. This light and stylish room works well for most events. When booked in conjunction with the Bridewell Hall, this space is ideal for registration and catering.

### CAPACITY

- a) Theatre style 60 (max)
- b) U Shaped 25 (max)
- c) Boardroom 25 (max)
- d) Classroom 35 (max)
- e) Standing 80 (max)

### COMMUNICATIONS

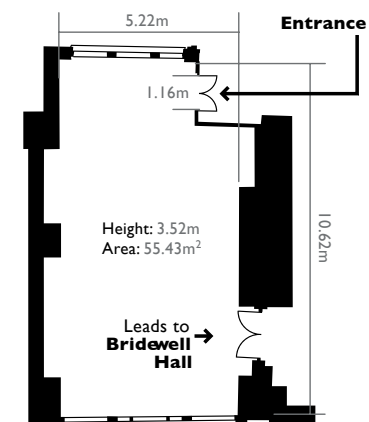
WiFi throughout

### LIGHTING

Natural daylight, blinds,  
exhibition lighting

### ACCESS

Disabled access via St Bride's  
Passage from Salisbury Court







*Medium Room*

## **SALISBURY ROOM**

**T**he Salisbury Room is a fine example of Victorian opulence and design. This classically proportioned room complete with a beautiful working fireplace and en-suite facilities together with award winning furniture creates a lavish yet peaceful setting for all events, from board meetings to weddings and partnership ceremonies.



It can be hired together with the Caxton Room for catering, registration or break out area.

Providing another link to the literary past of the area, there is an outstanding portrait of 18th century writer Samuel Richardson, author of such notorious works as Pamela and Clarissa.

#### CAPACITY

- a) Theatre style 22 (max)
- b) U Shaped 18 (max)
- c) Boardroom 22 (max)
- d) Standing 45 (max)

#### COMMUNICATION

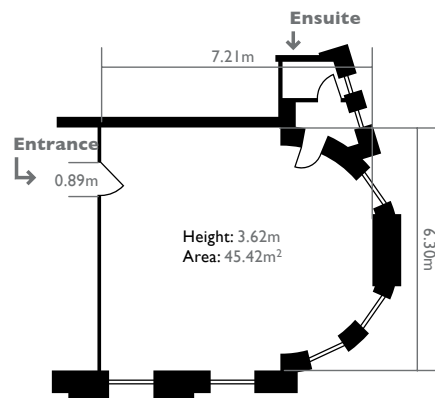
WiFi throughout

#### LIGHTING

Natural daylight, blinds, curtains and dimmable lights

#### ACCESS

Disabled access via St Bride's Passage from Salisbury Court







*Medium Room*

## PASSMORE EDWARDS ROOM

Originally the old Library Reading Room, the Passmore Edwards room provides an inspirational atmosphere with stunning views overlooking St. Bride's Church. The room is lined with bookcases housing works dating back to the 16th century, providing a stunning backdrop for any occasion.



### CAPACITY

- a) U Shaped 25 (max)
- b) Boardroom 30 (max)
- c) Standing 60 (max)

### COMMUNICATIONS

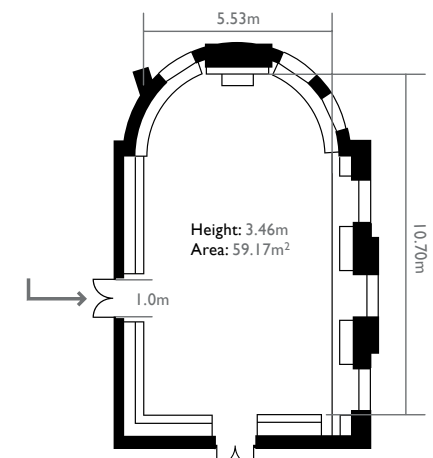
WiFi throughout

### LIGHTING

Natural daylight

### ACCESS

No disabled access







*Medium Room*

## THE PRINT WORKSHOP

Formally the Foundation's gymnasium, the Print Workshop was opened in 2010 to give visitors the opportunity to experience and learn traditional printing techniques using items from the Foundation's collections.

This unique room presents an outstanding venue for team building days focussing on letterpress and wood engraving workshops. A full programme of events run throughout the year or tailor-made workshops can be provided.

### COMMUNICATIONS

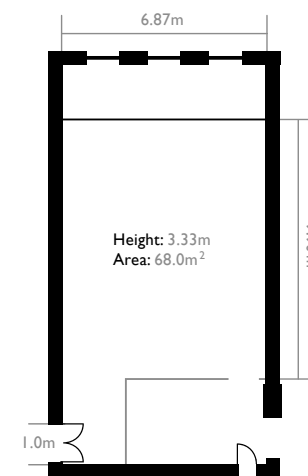
WiFi throughout

### LIGHTING

Natural daylight.

### ACCESS

No disabled access







*Medium Room*  
**BLACKFRIARS  
ROOM**

**A** flexible and versatile space with high ceilings and full of natural light makes this room ideally suited to holding community activities such as yoga, art classes, workshops or team building days.

#### COMMUNICATIONS

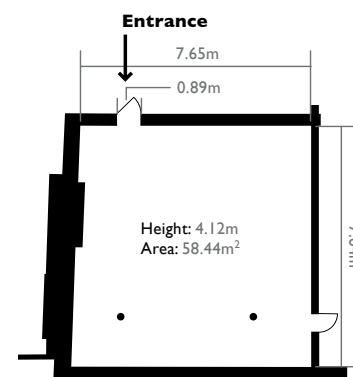
WiFi throughout

#### LIGHTING

Natural daylight, lighting on dimmers

#### ACCESS

No disabled access







## *Small Room* **FLEET ROOM**

**N**ot only the perfect location for workshops and art classes, our hourly rate makes this room ideal for all other community activities.

### COMMUNICATIONS

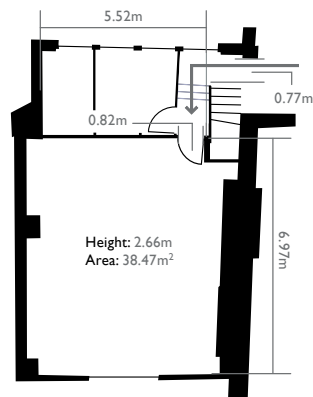
WiFi throughout

### LIGHTING

Natural daylight plus skylight.

### ACCESS

No disabled access



## *Small Room* **LUDGATE ROOM**

**T**his light and airy room makes a perfect location for a small and private meeting away from it all.

### CAPACITY

Boardroom style 8 (max)

### COMMUNICATIONS

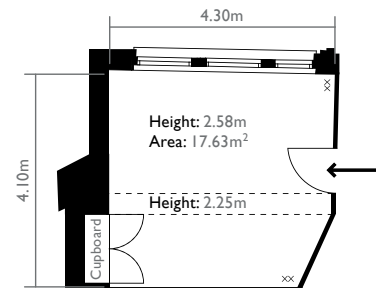
WiFi throughout

### LIGHTING

Natural daylight and blinds

### ACCESS

No disabled access





## *Medium Room* **BRIDEWELL THEATRE**

A unique and thrilling theatre space built over one of the City of London's first swimming pools. The Bridewell Theatre seats 134 in its standard configuration, alternatively all the seating can be removed to create a truly atmospheric ballroom or a magical cabaret venue, situated beneath the original Victorian swimming pool roof.

The viewing gallery and changing rooms remain in situ giving this historic venue a dramatic and surreal atmosphere. Early booking is essential as the theatre is also home to a full programme throughout the year.



### CAPACITY

- a) Theatre style 134 (max)
- b) Standing 200 (max)

### COMMUNICATIONS

WiFi available throughout

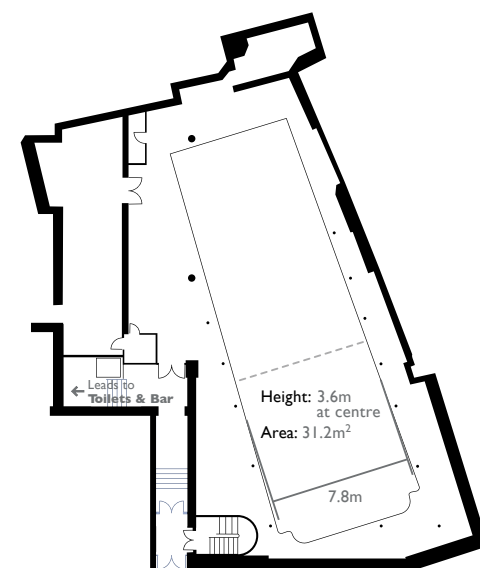
### LIGHTING

Natural daylight, blinds for full black out.  
Full lighting rig available

### ACCESS

Disabled access to the Bridewell Theatre from Bride Lane is via a portable ramp over a threshold stone with a riser height ranging between 110mm - 150mm from right to left. Access from the threshold to the auditorium is via a stairlift (230Kg weight load) and to the theatre bar and lavatories via a platform lift (340Kg weight load).

Before visiting please call ahead for further information.







## *Small Room* **THEATRE BAR**

**T**he Theatre Bar represents the greatest change in the Foundation since Victorian times — what was once a dark, damp & steamy laundry is now our quirky charming bar. It exudes warmth & character nestled amongst the original wooden washing machines and spin dryer. Ideal for private parties and really is one of the true hidden gems in central London.

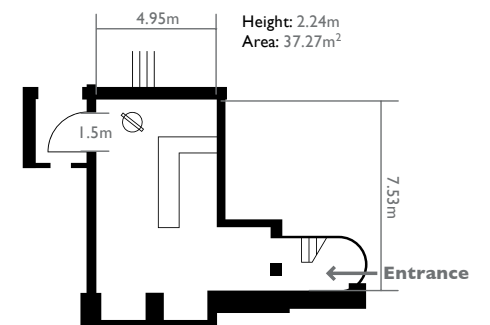


### CAPACITY

Enquire about numbers depending on configuration

### ACCESS

Disabled access via Bride Lane





# COMMITMENT & ACCESS

## CLIENT CHARTER

The St Bride Foundation team promises to:

Be flexible and accommodate clients' requirements as far as possible.

Respond to clients' requests in person, by telephone, email or other correspondence within 24 hours.

Ensure all clients receive a professional, high quality and enjoyable experience at the Foundation.

Provide access to all through its Diversity Policy.

Work with all staff and partners of choice to continually improve service and commitment to clients.

Seek feedback from clients to help shape services and responsiveness in the future.

Provide effective induction and training of all staff through the Foundation's training programme.

Supervise the public and building in a manner that ensures the enjoyment of the facilities within the restrictions imposed by health and safety regulations.

Our Environmental Policy is to promote the use of sustainable resources and discourage practises that are wasteful and damaging to the environment.

## ACCESS TO ALL

The St Bride Foundation encourages access to all. Our clients come from a diverse range of backgrounds and include corporations, charitable institutions and private individuals.

Due to the sustained and greatly appreciated business of our corporate clients, the St Bride Foundation is able to offer registered charities a significant discount on room hire.

Corporate clients can rest assured they are subsidising room hire to charitable organisations.

## DIVERSITY STATEMENT

The Foundation promises to:

Produce a wide range of promotional material and media that advise and inform customers and all members of the community of the services and facilities available.

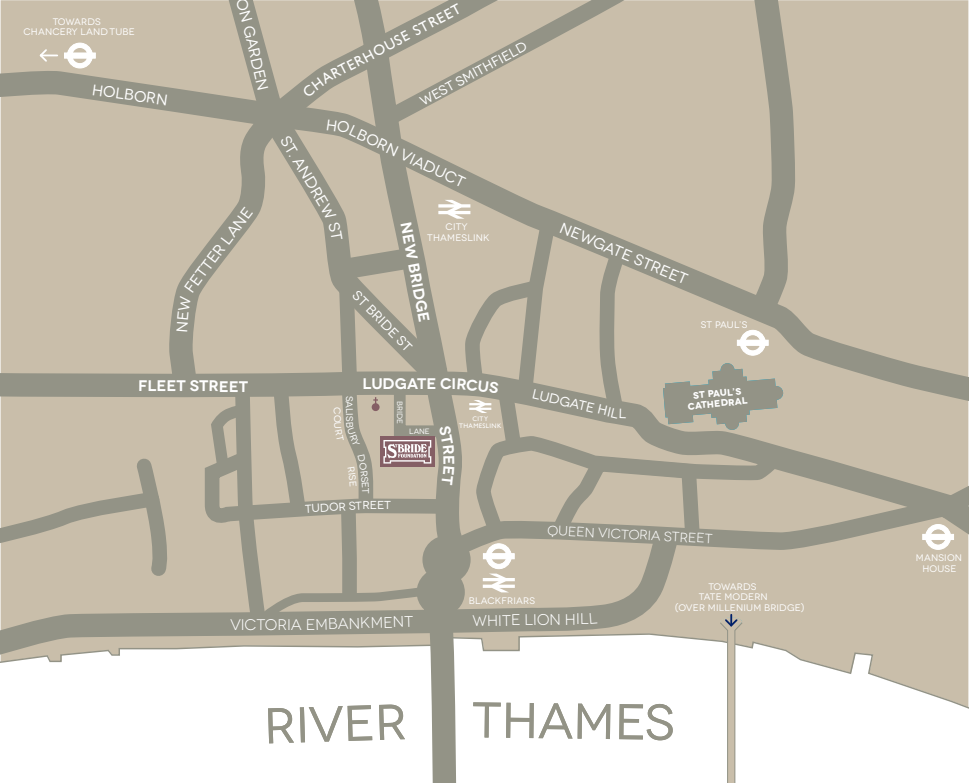
Offer a customer friendly booking and payment system through a variety of methods.

Promote accessibility through keen pricing and significant discounts for charitable groups.

Develop the physical accessibility of the Foundation where possible.

Seek customer views and comments on the services provided through an open and responsive forum.

# GENERAL INFO



## BY TUBE

Blackfriars District & Circle line  
(3 mins to Foundation)

St Paul's Central line  
(7 mins to Foundation)

## BY BUS

Fleet Street 4, 11, 15, 23, 26, 76  
New Bridge Street 45, 63, 172

## BY RAIL

City Thameslink (2 minutes to Foundation)

Disabled access to the Foundation via St Bride's Passage entrance from Salisbury Court is over threshold stone with a riser height of 50mm.

Disabled access to the Bridewell Theatre from Bride Lane is via a portable ramp over a threshold stone with a riser height ranging between 110mm - 150mm from right to left. Access from the threshold to the auditorium is via a stairlift (230Kg weight load) and to the theatre bar and lavatories via a platform lift (340Kg weight load).





Precision  
Printing

#### What we do?

Print stuff that is brilliant, vibrant, engaging  
and will be valued by the reader

#### We drive actions!

Here is a short video about the Pantone Queen  
that resulted in over 1 million hits on Google:  
<http://tinyurl.com/pantonequeen>

#### Bev Butler

(Business Development Manager)  
T: 0845 606 4001  
[www.precisionprinting.com](http://www.precisionprinting.com)

Precision Printing co Ltd  
47 Thames Road  
Barking IG11 OHQ



**PRINT KINDLY SPONSORED BY PRECISION PRINTING COMPANY LTD.**  
PLATINUM SPONSORS OF ST BRIDE FOUNDATION.

**PAPER KINDLY SPONSORED BY ANTALIS MCNAUGHTON LTD.**  
PLATINUM SPONSORS OF ST BRIDE FOUNDATION.

ST BRIDE FOUNDATION

## JOIN US TODAY!

In order for us to continue to renovate  
and showcase all we have to offer at  
St Bride Foundation, we need your help.

You can do this by becoming a member or a sponsor  
all with differing benefits.

Friend of St Bride Foundation - Individual membership

SILVER SPONSOR

GOLD SPONSOR

PLATINUM SPONSOR

Each sponsorship level carries different discounts and other benefits, plus  
you will also be given the new sponsorship logo to display on your website  
and literature showing your support.

We do hope you will consider sponsoring, or becoming a member  
and help us to continue to develop the Foundation.

For an application form, or for further information  
call us today on **020 7353 3331**

or email [info@sbf.org.uk](mailto:info@sbf.org.uk)



Brochure concept, design and photography by  
RARE Design Associates Ltd

**ST BRIDE FOUNDATION**

BRIDE LANE, FLEET STREET

LONDON EC4Y 8EQ

T: 020 7353 3331

[WWW.SBF.ORG.UK](http://WWW.SBF.ORG.UK)

[BOOKINGS@SBF.ORG.UK](mailto:BOOKINGS@SBF.ORG.UK)

REGISTERED CHARITY NUMBER: 207607

